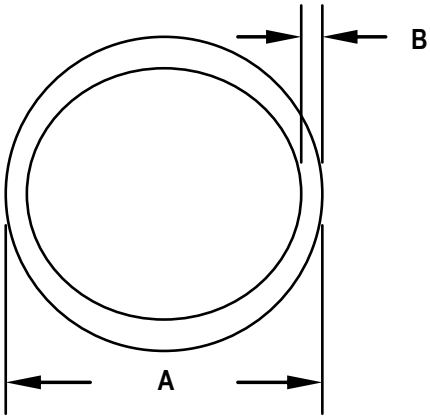




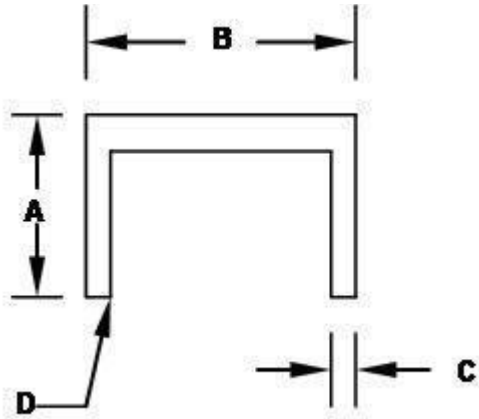
Aluminastic Corporation's proprietary processing of secondary aluminums provide extruded materials to fabricators and manufacturers that meets and exceeds (AA) designations and standards. Aluminastic material is stronger, more formable and has a superior finish over standard alloys. These added values allow for less failure rates and increased efficiencies for our customers.

We pride ourselves on customer service; providing short lead times, small order quantities, and competitive pricing.

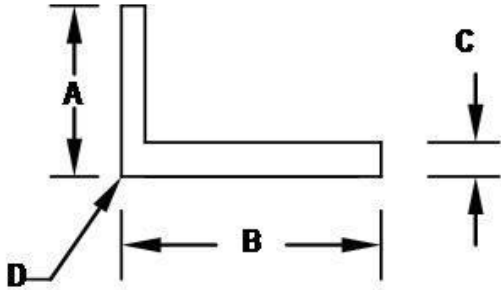
Please browse our catalog and click on our sales email link for a quote on 6061 and 6063 alloys. Aluminastic Corporation can also produce other alloys and custom thin wall (0.010") extrusions with very tight tolerances down to +/- 0.001 for specific applications.



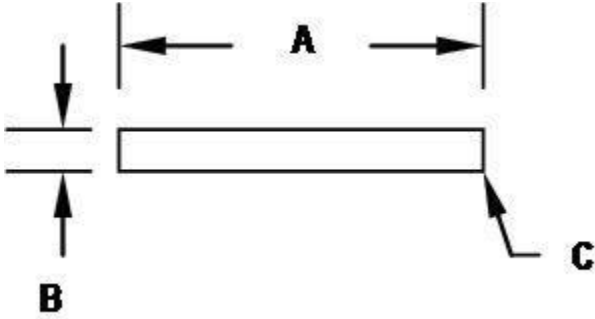
Part #	A	B	Wt/Ft	
AC1059	0.598	0.049	0.083	
AC1060	0.625	0.510	0.124	
AC198	1.050	0.113	0.391	
AC165	0.750	0.060	0.156	
AC1062	0.875	0.125	0.353	
AC1067	1.125	0.125	0.470	
AC147	1.311	0.124	0.554	
AC176	1.315	0.133	0.593	1" schedule #40
AC1073	1.625	0.125	0.707	
206	1.900	0.145	0.960	1-1/2" schedule #40
AC1056	1.938	0.065	0.450	
AC149,AC158	2.000	0.125	0.883	
AC146	2.250	0.140	1.114	
AC163	3.000	0.065	0.719	
AC145	3.015	0.266	0.2756	



Part #	A	B	C	D	Wt/Ft	
AC105	0.375	0.750	0.125	0.015	0.188	
AC115	0.500	0.750	0.094	0.015	0.174	
AC1120	0.625	0.625	0.063	0.015	0.149	
AC199	0.750	0.500	0.094	0.015	0.204	
AC110	0.750	0.750	0.063	0.031	0.158	
AC151	1.000	1.000	0.125	0.060	0.407	
AC143	1.000	2.000	0.125	0.030	0.562	
AC152	1.000	3.000	0.125	0.060	0.707	
AC212	1.250	2.000	0.250	0.050	1.061	
AC208	1.410	3.000	0.170	0.100	1.482	Structural
AC207	1.490	4.000	0.180	0.110	1.779	Structural
AC214	1.498	3.000	0.170	0.100	1.800	Structural
AC139	1.500	0.875	0.063	0.060	0.277	
AC1087	1.500	2.000	0.156	0.090	0.878	
AC200	1.500	4.000	0.125	0.030	1.949	
AC215	1.580	4.000	0.180	0.110	1.833	Structural
AC144	2.000	2.000	0.125	0.030	0.863	
AC216	2.034	6.000	0.200	0.125	3.731	Structural
AC217	2.290	8.000	0.220	0.130	4.461	Structural
AC1103	2.250	1.500	0.250	0.040	1.650	
AC213	2.250	4.000	0.281	0.031	2.320	Structural
AC237	2.400	1.500	0.125	0.187	0.756	

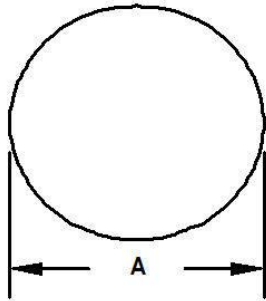


Part #	A	B	C	D	Wt/Ft
AC128	0.500	1.500	0.125	0.060	0.276
AC103	0.500	1.500	0.125	0.015	0.280
AC192	0.625	0.625	0.090	0.010	0.125
AC157	0.750	0.750	0.125	0.060	0.204
AC1356	0.750	1.000	0.250	0.030	0.449
AC102	0.750	2.000	0.125	0.015	0.280
AC167	1.000	1.000	0.062	0.015	0.144
AC184	1.000	1.000	0.125	0.015	0.281
AC209	1.000	1.000	0.125	0.015	0.281
AC138	1.250	1.250	0.125	0.030	0.356
AC150	1.250	1.250	0.250	0.060	0.676
AC136	1.500	1.500	0.125	0.030	0.431
AC113	1.500	1.500	0.187	0.015	0.630
AC175	1.500	1.500	0.187	0.015	0.635
AC160	1.500	1.500	0.250	0.030	0.824
AC194	1.500	2.000	0.188	0.015	0.758
AC210	1.500	1.500	0.188	0.015	0.637
AC111	1.750	1.750	0.250	0.030	0.974
AC227	2.000	2.000	0.105	0.015	0.491
AC137	2.000	2.000	0.125	0.030	0.581
AC140	2.000	2.000	0.188	0.016	0.857
AC253	2.000	2.000	0.250	0.015	1.106
AC230	2.000	2.000	0.250	0.125	1.133
AC211	2.000	3.000	0.250	0.015	1.432
AC1358	3.000	3.000	0.150	0.093	1.064

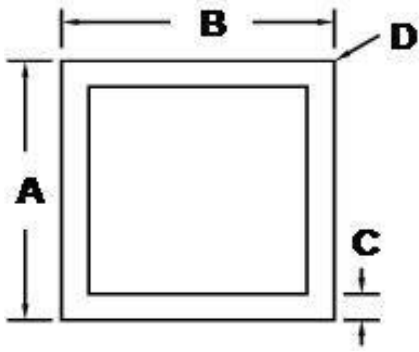


Part #	A	B	C	Wt/Ft
AC153	0.500	0.125	0.030	0.076
AC219	0.500	0.125	0.010	0.075
AC109	0.500	0.500	0.060	0.296
AC1055	1.000	0.750	0.015	0.900
AC142	1.000	0.188	0.015	0.224
AC1497	1.000	0.119	0.015	0.226
AC187	1.000	0.375	0.030	0.449
AC106	1.000	0.094	0.045	0.106
AC161	1.000	0.250	0.060	0.296
AC155	1.000	0.500	0.030	0.599
AC129	1.000	0.500	0.060	0.596
AC193	1.500	0.125	0.125	0.225
AC252	1.500	0.188	0.015	0.333
AC104	1.500	0.250	0.015	0.450
AC141	1.500	0.375	0.016	0.674
AC1496	1.590	0.188	0.015	0.359
AC101	1.750	0.188	0.015	0.394
AC195	2.000	0.188	0.015	0.451
AC112	2.000	0.250	0.030	0.599
AC229	2.500	0.250	0.015	0.738
AC251	2.500	0.375	0.015	1.106
AC180	3.000	0.250	0.030	0.899
AC246	3.000	0.500	0.015	1.770
AC247	3.000	0.750	0.015	2.665
AC181	4.000	0.250	0.030	1.199

AC188	5.000	0.125	0.015	0.750
AC239	5.000	0.250	0.015	1.500
AC182	6.000	0.250	0.030	1.799

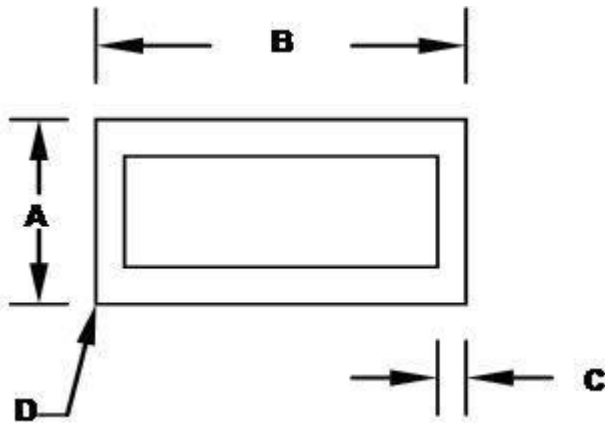


Part #	A	B	C	Wt/Ft
AC1064	0.307	X	X	0.089
AC168	0.375	X	X	0.132
AC174	0.500	X	X	0.235
AC222	0.675	X	X	0.368



Part #	A	B	C	D	Wt/Ft
AC126	0.750	0.750	0.125	0.030	0.375
AC183	0.750	0.750	0.062	0.030	0.204
AC223	0.840	0.840	0.070	0.125	0.246
AC108	1.000	1.000	0.062	0.030	0.278
AC127	1.000	1.000	0.125	0.030	0.524
AC189	1.000	1.000	0.125	0.156	0.500
AC118	1.000	1.000	0.125	0.063	0.524
AC235	1.000	1.000	0.187	0.062	0.726
AC173	1.250	1.250	0.062	0.030	0.353
AC202	1.000	1.000	0.062	0.062	0.275
AC224	1.000	1.000	0.070	0.125	0.300
AC186	1.250	1.250	0.125	0.125	0.659
AC185	1.375	1.375	0.125	0.060	0.746
AC107	1.500	1.500	0.062	0.030	0.427
AC162	1.500	1.500	0.050	0.030	0.347
AC250	1.500	1.500	0.070	0.015	0.472
AC201	1.500	1.500	0.093	0.062	0.630
AC125	1.500	1.500	0.125	0.062	0.821
AC238	1.500	1.500	0.250	0.125	1.488
AC1178	1.625	1.625	0.188	0.125	1.294
AC121	1.750	1.750	0.125	0.125	0.959
AC114	2.000	2.000	0.125	0.125	1.109
AC123	2.000	2.000	0.125	0.030	1.124
AC203	2.000	2.000	0.125	0.062	1.121

AC178	2.000	2.000	0.187	0.030	1.631
AC197	2.000	2.000	0.250	0.250	2.035
AC232	2.000	2.000	0.250	0.063	2.093
AC236	2.000	2.000	0.250	0.015	2.100
AC166	3.000	3.000	0.090	0.030	1.256



Part #	A	B	C	D	Wt/Ft
AC119	1.000	2.000	0.125	0.063	0.824
AC234	1.000	2.000	0.120	0.063	0.791
AC1300	1.000	2.000	0.125	0.015	0.825
AC120	1.000	4.000	0.125	0.063	1.440
AC233	1.500	2.000	0.125	0.063	0.971
AC204	1.500	2.000	0.125	0.125	0.959
AC231	1.500	2.000	0.188	0.063	1.405
AC205	1.500	2.750	0.125	0.062	1.196
AC124	1.500	3.000	0.125	0.062	1.271
AC190	2.000	1.500	0.125	0.015	0.975
AC191	2.000	3.000	0.125	0.030	1.425
AC179	2.000	3.000	0.125	0.030	1.425
AC116	2.000	4.000	0.200	0.015	2.687
AC245	2.000	4.000	0.250	0.015	3.300